

# Rock Speaker (8 Ohm 70/100 Volt Ready)

This rock-like speaker features a 70/100 volt transformer allowing several speakers to be connected together without concern for the impedance seen by the amplifier. A 70/100 volt amplifier must be used to accomplish this.

**WARNING:** Refer to the installation below for proper installation in a 70/100 volt system.

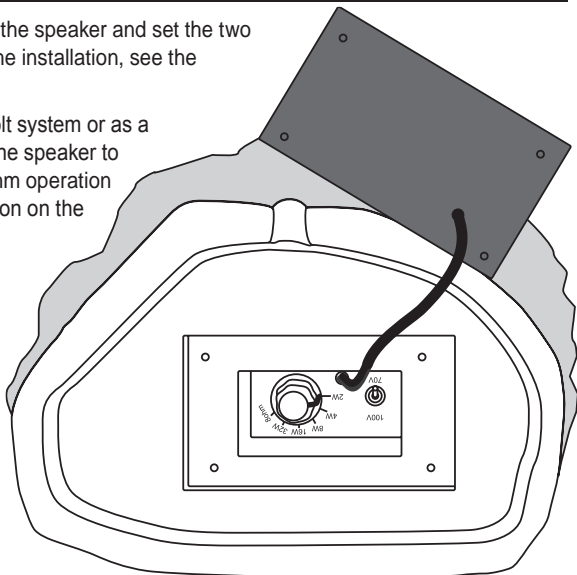
## INSTALLATION

Remove the protective plate on the bottom of the speaker and set the two switches to the proper settings according to the installation, see the guidelines below:

A: The speaker can be used in a 70 or 100 volt system or as a standard 8 Ohm speaker. To properly set the speaker to a 70/100 volt system or as a standard 8 Ohm operation flip or turn the switches to the proper position on the bottom of the speaker.

**NOTE:** In 70/100 volt operation, be sure to set the selector according to the power output of the amplifier being used and the number of speakers being installed. For 8 Ohm operation, be sure to set the selector to the 8 Ohm setting.

B: When used in 70/100 volt operation, turn the switch to choose from 2, 4, 8, 16 or 32 Watt taps.



## Parallel Connection

A parallel connection exists when speakers are connected directly to an amplifier (as shown in the illustration below). Each speaker's positive terminal is connected to the amplifier's positive terminal, and each negative terminal is directly connected to the amplifier's negative terminal. This type of connection should be made when using a 70/100 Volt amplifier.

**NOTE:** In this example, each speaker is set to 70/100 Volt operation and is being powered by a 70/100 Volt amplifier. Make sure to properly select 70/100 Volt or 8 Ohm operation before connecting the speakers to the amplifier.

## SPECIFICATIONS

**System Type:** Rock 2-way Speaker  
(8 Ohm or 70/100 Volt Ready)

**Frequency Response:** 58Hz-20kHz  $\pm$ 3dB

**Sensitivity:** 90dB (2.83V/1 meter)

**Recommended Power:** 15-150 Watts

**Woofer(s):** 8" (203mm) Polygraphite Cone

**Tweeter(s):** 3/4" (19mm) Mylar Dome

**Crossover Frequencies:** 3,000 Hz

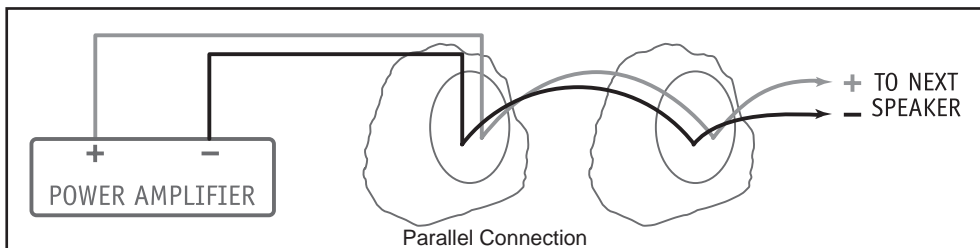
**Crossover Slope:** 12dB/Octave

**Impedance:** 8 Ohm or 70/100 Volt

**Finish:** Brown, Granite or Sandstone

**Finished Dimensions:** 12-1/2" W x 11-1/8" H x 8-1/2" D  
(317mm W x 286mm H x 216mm D)

**Weight:** 12-3/4 lbs. (5.78 Kg)



**CAUTION:** If your amplifier isn't capable of handling the impedance of all connected speakers, this may result in overloading the amplifier and may cause possible damage to the amplifier. Check your amplifier's documentation for proper impedance levels.